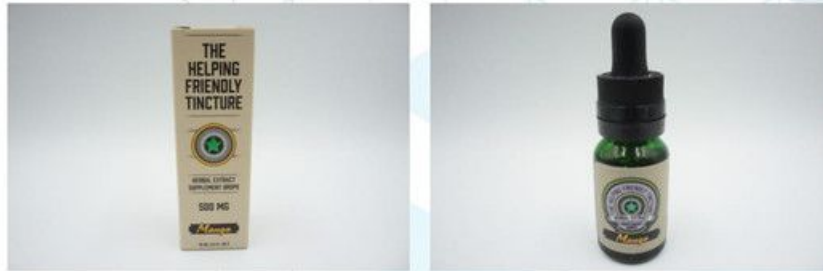


Isolate Tincture- Mango 500mg

 Sample ID: SA-07132021-2712
 Batch: 10031
 Type: Finished Materials
 Matrix: Oil / Liquid - Other

 Received: 07/26/2021
 Completed: 07/30/2021

Client

 The Helping Friendly Hemp Co.
 740 W. 11 Mile Road
 Madison Heights, MI 48071
 USA


Summary

 Test
 Cannabinoids

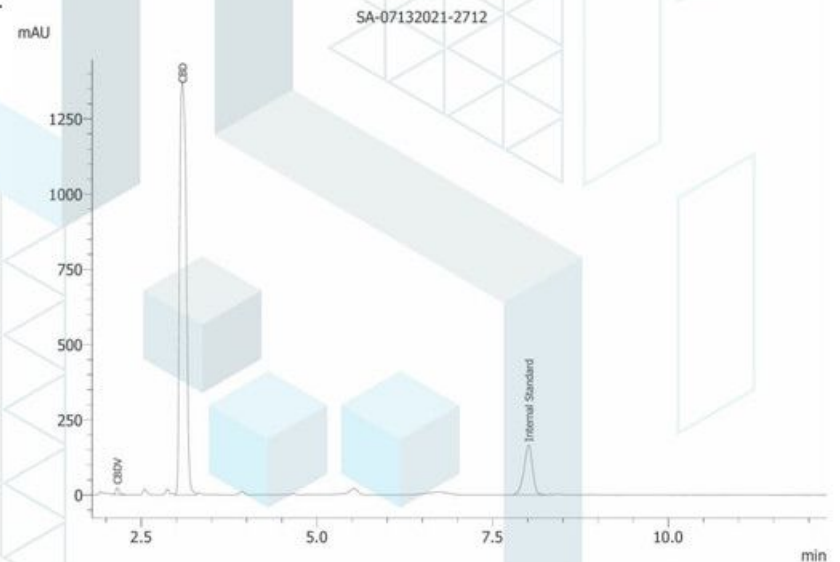
 Date Tested
 07/30/2021

 Status
 Tested

Cannabinoids by HPLC-PDA

ND	3.56 %	3.57 %	Not Tested	Not Tested	Yes
Total Δ9-THC	CBD	Total Cannabinoids	Moisture Content	Foreign Matter	Internal Marker Recovered

Analyte	LOD (%)	LOQ (%)	Result (mg/mL)	Result (%)
CBC	0.00095	0.00284	ND	ND
CBCA	0.00181	0.00543	ND	ND
CBCV	0.0006	0.0018	ND	ND
CBD	0.00081	0.00242	33.473	3.56281
CBDA	0.00043	0.0013	ND	ND
CBDV	0.00061	0.00182	0.076	0.00809
CBDVA	0.00021	0.00063	ND	ND
CBG	0.00057	0.00172	ND	ND
CBGA	0.00049	0.00147	ND	ND
CBL	0.00112	0.00335	ND	ND
CBLA	0.00124	0.00371	ND	ND
CBN	0.00056	0.00169	ND	ND
CBNA	0.0006	0.00181	ND	ND
Δ8-THC	0.00104	0.00312	ND	ND
Δ9-THC	0.00076	0.00227	ND	ND
Δ9-THCA	0.00084	0.00251	ND	ND
Δ9-THCV	0.00069	0.00206	ND	ND
Δ9-THCVA	0.00062	0.00186	ND	ND
Total Δ9-THC			ND	ND
Total CBD			33.473	3.56281
Total			33.549	3.5709



ND = Not Detected; NT = Not Tested; LOD = Limit of Detection; LOQ = Limit of Quantitation; RL = Reporting Limit; Δ = Delta; Total Δ9-THC = Δ9-THCA * 0.877 + Δ9-THC; Total CBD = CBDA * 0.877 + CBD



07/30/2021


 ISO/IEC 17025:2017 Accredited
 Accreditation #108651




Certificate of Analysis

Sample: MO10111038-001
Harvest/Lot ID: 10019
Seed to Sale #N/A
Batch Date :N/A
Batch#: 10019

Sample Size Received: 1 units
Retail Product Size: 15
Ordered : 01/11/21
Sampled : 01/11/21

Completed: 01/15/21 Expires: 01/15/22
Sampling Method: SOP Client Method

Jan 15, 2021 | The Helping Friendly
Hemp Co.

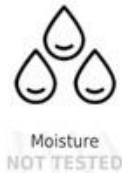
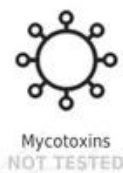
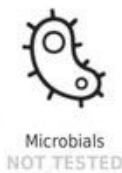
2697 Locksley Ct
Troy, UM-84, 48083, US



PASSED

Page 1 of 1

PRODUCT IMAGE SAFETY RESULTS



MISC.

CANNABINOID RESULTS



Total THC
0.000%
TOTAL THC/Container :0.000 mg



Total CBD
4.016%
TOTAL CBD/Container :560.232 mg



Total Cannabinoids
4.016%
Total Cannabinoids/Container :560.232 mg



	D9-THC	THCA	CBD	CBDA	D8-THC	THCV	CBN	CBDV	CBC	CBG	CBGA
	ND	ND	4.016%	ND	ND	ND	ND	<0.010	ND	ND	ND
	ND	ND	40.160 mg/g	ND	ND	ND	ND	<0.010	ND	ND	ND
LOD	0.0001	0.001	0.0001	0.001	0.001	0.001	0.001	0.001	0.001	0.001	0.001
	%	%	%	%	%	%	%	%	%	%	%

Cannabinoid Profile Test

Analyzed by: 19
Weight: 1.5176g
Extraction date: NA
Extracted By: NA
Analysis Method -SOP.T.40.020, SOP.T.30.050
Reviewed On - 01/13/21 12:41:51
Batch Date : 01/12/21 10:02:43
Analytical Batch -MO001632POT
Instrument Used : HPLC Potency Analyzer

Reagent Dilution Consums. ID

Full spectrum cannabinoid analysis utilizing High Performance Liquid Chromatography with UV detection (HPLC-UV). (Method: SOP.T.30.050 for sample prep and Shimadzu High Sensitivity Method SOP.T.40.020 for analysis. LOQ for all cannabinoids is 1 mg/L. Measurement of Uncertainty: 2.7%

This report shall not be reproduced, unless in its entirety, without written approval from Universal Diagnostic Labs. This report is an Universal Diagnostic Labs certification. The results relate only to the material or product analyzed. Test results are confidential unless explicitly waived otherwise. Void after 1 year from test end date. Cannabinoid content of batch material may vary depending on sampling error. IC=in-control QC parameter, NC=Non-controlled QC parameter, ND=Not Detected, NA=Not Analyzed, ppm=Parts Per Million, ppb=Parts Per Billion, Limit of Detection (LoD) and Limit Of Quantitation (LoQ) are terms used to describe the smallest concentration that can be reliably measured by an analytical procedure. RPD=Reproducibility of two measurements. Action Levels are State determined thresholds for human safety for consumption and/or inhalation. The result >99% are variable based on uncertainty of measurement (UM) for the analyte. The UM error is available from the lab upon request. The "Decision Rule" for the pass/fail does not include the UM. The limits are based on F.S. Rule 64-4.310.

David Greene
Lab Director

State License # 19-05-02P
ISO Accreditation # .

Signature

01/15/2021

Signed On



Certificate of Analysis



HF Isolate Tincture 500mg - Strawberry
 Matrix: Edible
 Accession Number: 012622UD0004
 Harvest/Lot ID:
 Seed to Sale: *
 Batch Date: 01/24/22
 Batch #: 10040
 Sample Size Received: 15 ml
 Retail Product Size: 15
 Ordered: 01/24/22
 Completed: 02/01/22
 Expires: 01/31/23
 Sampling Method: SOP Client Method

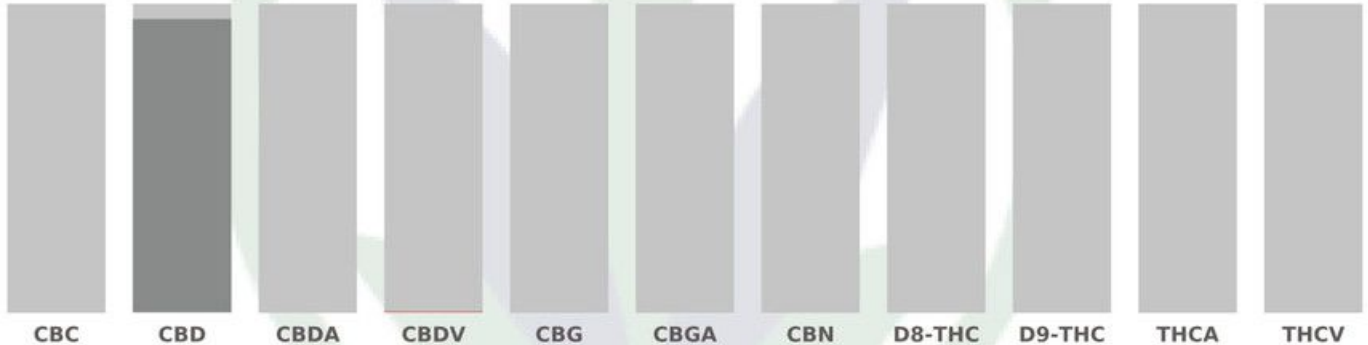
Feb 01, 2022 | The Helping Friendly Hemp Co.



Madison Heights, MI, 48071
 (515) 724-3758

CANNABINOID RESULTS

Total THC 0.000% THC/Container :0 mg	Total CBD 3.378% CBD/Container :506.7 mg	Total Cannabinoids 3.385% Cannabinoids/Container :507.75 mg
--	--	---



Cannabinoid	Conc. (wt%)	Conc. (mg/g)	LOQ
CBC	ND	ND	0.001
CBD	3.378	33.780	0.001
CBDA	ND	ND	0.001
CBDV	0.007	0.070	0.001
CBG	ND	ND	0.001
CBGA	ND	ND	0.001
CBN	ND	ND	0.001
D8-THC	ND	ND	0.001
D9-THC	ND	ND	0.001
THCA	ND	ND	0.001
THCV	ND	ND	0.001

Analyzed by	Date	Instrument used	Analysis Method
TW	01/31/2022	Shimadzu HPLC w/ PDA	SOP.KY.02.012

Full spectrum cannabinoid analysis utilizing High Performance Liquid Chromatography with UV detection (HPLC-PDA). SOP.KY.02.005 for sample prep and SOP.KY.02.012 for analysis. % = %w/w = Percent (Weight of Analyte/Weight Product) Total Cannabinoids result reflects the absolute sum of all cannabinoids detected. **Total Potential THC/CBD is calculated using the following formulas to take into account the loss of a carboxyl group during decarboxylation Total THC = THC + (THCa*0.877) Total CBD = CBD + (CBDA*0.877)

This report shall not be reproduced, unless in its entirety, without written approval from BlueLeaf Laboratory. This report is an BlueLeaf Laboratory certification. The results relate only to the material or product analyzed. Test results are confidential unless explicitly waived otherwise. Void after 1 year from test end date. Cannabinoid content of batch material may vary depending on sampling error. IC=In-control QC parameter, NC=Non-controlled QC parameter, ND=Not Detected, NA=Not Analyzed, ppm=Parts Per Million, ppb=Parts Per Billion. Limit of Detection (LoD) and Limit Of Quantitation (LoQ) are terms used to describe the smallest concentration that can be reliably measured by an analytical procedure. RPD=Reproducibility of two measurements. Action Levels are State determined thresholds for human safety for consumption and/or inhalation. The result >99% are variable based on uncertainty of measurement (UM) for the analyte. The UM error is available from the lab upon request. The "Decision Rule" for the pass/fail does not include the UM. The limits are based on F.S. Rule 64-4.310.

Daniel Burriss
 Lab Director
 State License # 19-05-02P
 ISO/IEC 17025:2017

Daniel Burriss

02/01/22



Signature _____ Signed On _____